

# ROSES of Excellence

LIBRARY RECEIVED  
 SEP 13 1954  
 U. S. Department of Agriculture

**TOP TEN ALL-AMERICA ROSE WINNERS**  
 2-Yr., Blooming Size Plants

**CHARLOTTE ARMSTRONG.** Patent 455. Vivid cerise. \$2.25 each.

**FORTY-NINER.** Patent 792. Outside petals yellow, inside red. \$2.50 each.

**KATHERINE T. MARSHALL.** Patent 607. Soft salmon-pink. \$1.75 each.

**LOWELL THOMAS.** Pat. 595. Vibrant chrome-yellow. \$2.00 ea.

**MIRANDY.** Patent 632. One of the finest red Roses. \$2.25 each.

**NOCTURNE.** Patent 713. Bright cardinal-red. \$2.00 each.

**PEACE.** Patent 591. Lovely blend of yellow, cream and pink. \$2.50 each.

**RUBAIYAT.** Patent 758. Large, rich crimson. \$1.75 each.

**SAN FERNANDO.** Patent 785. Intense currant-red. \$1.75 each.

**TALLYHO.** Patent 828. True old-rose color. \$2.00 each.

**TOP TEN COLLECTION: One each of above All-America Roses—Total Ten—\$18.30.**



**FLORIBUNDA ROSE**

2-Year, Blooming Size Plants—For Lots of Bloom

**FLORADORA.** Brilliant cinnabar-red double flowers. \$1.50 each.

**CLIMBING ROSES**

**BLAZE.** Patent 10. Scarlet-crimson. Profusion of blossoms in June, scattered through the fall. \$1.50 each.

**ETOILE DE HOLLANDE CLIMBER.** Differs from bush type only by being a strong-growing, free-blooming, red climber. \$1.50 each.

**MRS. P. S. DUPONT CLIMBER.** Yellow buds and flowers, same as bush form. \$1.50 each.

**NEW DAWN.** Patent 1. Outstanding flesh-pink. \$1.50 each.

**PAUL'S SCARLET CLIMBER.** Most popular red climber. \$1.35 each.

**PEACE CLIMBER.** Patent 922. Climbing sport of this popular Rose; blooms identical. \$2.50 each.

Write for Free Copy 66-page Planting Guide Catalog in color, illustrating Top-Ten and other Roses.

**CHARMING ROSE COLLECTION**

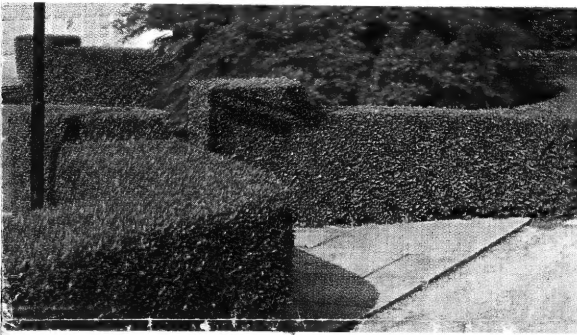
2-Yr. Blooming Size Plants

1. Etoile de Hollande
2. Caledonia
3. Ami Quinard
4. Golden Dawn
5. Editor McFarland

Two of each—total 10 Roses—\$12.00.

One of each—Total 5 Roses—\$6.25.

Sold separately at \$1.35 each.



62.89 Index \*

## HARDY NUT TREES

For Shade and Profitable Crops  
 Plant two or more to provide for cross pollination.



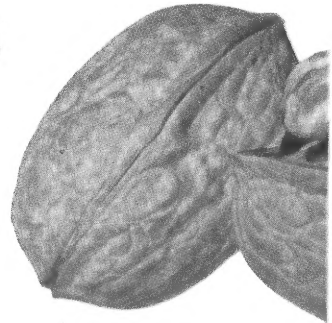
American Filbert

**FILBERTS (Hazelnuts)**

Adapted to a wide range of soil and climate.

**NATIVE AMERICAN FILBERT.** Dwarf grower, trees maturing at 15 feet. Attractive bush, young bearer. Tasty, round nuts.

	1 to 5	5 to 10	10 to 30
	Each	Each	Each
2-3 ft.	\$1.50	\$1.25	\$1.00
3-4 ft., Bearing Size	2.00	1.75	1.50
4-5 ft., Bearing Size	3.00	2.75	2.50
5-6 ft., Bearing Size	4.00	3.75	3.00



**ENGLISH WALNUT**

Hardy, thin shell. Being planted commercially from Florida to New York. Trees long-lived, prolific. Nuts excellent quality, selling for equally as much as those grown in California.

**BARCELONA.** Improved, large English Filbert. Plant with American for cross pollination.

**PRICES**

	1 to 5	5 to 10	10 to 30
	Each	Each	Each
3-4 ft.	\$3.00	\$2.75	\$2.50

**CHINQUAPIN**

Small shrub-like tree. Early bearer. Delicious nuts 1/2 inch in diameter ripening in September. Ornamental and fruitful.

	1 to 5	5 to 10	10 to 30
	Each	Each	Each
18-24 in., Bearing Size	\$2.25	\$2.00	
2-3 ft., Bearing Size	2.75	2.50	

**BLACK WALNUT**

Planted for both nuts and timber.

	1 to 10	10 to 30
	Each	Each
2-3 ft.	\$1.20	\$1.00
3-4 ft.	1.75	1.60
4-6 ft.	2.25	2.00
6-8 ft.	3.00	2.75
8-10 ft.	3.75	3.50

## PECANS

### The Profitable Nut Crop of the South Good for Shade

The most profitable nut crop of the South. Planting not recommended north of Virginia. Useful for shade as well as growing for nuts.

**STUART.** Possibly the best known and most extensively planted Pecan.

	1 to 5	5 to 10	10 to 30
	Each	Each	Each
3-4 ft.	\$3.25	\$3.00	\$2.75
4-5 ft.	4.00	3.75	3.50

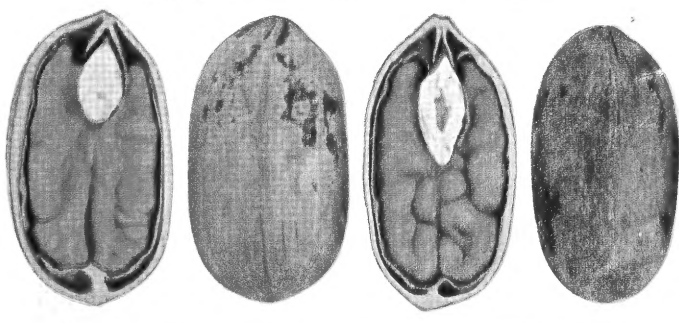
**MAYHAN.** New Giant Early Bearer. Trees frequently start bearing two or three years after being transplanted.

	1 to 5	5 to 10	10 to 30
	Each	Each	Each
3-4 ft.	\$3.75	\$3.50	\$3.25
4-5 ft.	4.75	4.50	4.25

**PAPERSHELL PECAN**

Thin shell. Good quality.

	1 to 5	5 to 10	10 to 30
	Each	Each	Each
3-4 ft.	\$2.75	\$2.60	\$2.45
4-5 ft.	3.50	3.25	3.00





Lovely Crape Myrtle



Spring Glory—The Loveliest Forsythia

**HYDRANGEA P.G.** Enormous white, conical-shaped heads appearing in August and remaining intact throughout season, turning light pink in fall. 18-24 in., \$1.00 each. 2-3 ft., \$1.50 each. 3-4 ft., \$2.00 each.

**HYDRANGEA, BLUE.** Also known as French Hydrangea. Massive blue blooms from May until frost. For best results and violet-blue blossoms, plant in moist, acid soil, using peat moss, Rho-Za-Grow or similar organic material. Prefers partial shade and winter protection, as given Roses. 2-yr., \$1.25 each.

**HYDRANGEA, HILLS OF SNOW.** Large, flat, white, snowball-like flowers throughout summer. 18-24 in., \$1.00 each.

**KERRIA JAPONICA.** Yellow blossoms all summer. 3-4 ft., \$2.00 each.

**LILAC, NAMED VARIETIES.** Lilacs are more in demand than ever and following varieties are selected to furnish an assortment of colors.

**Belle de Nancy.** Double pink.

**Charles X.** Single reddish purple.

**Doyen Keteleer.** Double pink.

**Ludwig Spaeth.** Single violet-red.

**PRICES ON ABOVE NAMED LILACS:** 18-24 in., \$1.75 each. 2-3 ft., \$2.25 each.

**LILAC, COMMON PURPLE AND WHITE.** Old-fashioned Purple and White. 2-3 ft., \$1.75 each. 3-4 ft., \$2.25 each.

**LILAC, CHINESE (Rothomagensis).** Violet-red. Profuse bloomer. 3-4 ft., \$2.25 each. 4-5 ft., \$2.75 each.

**MOCKORANGE, CORONARIUS.** Masses of creamy white flowers in May. Vigorous. 2-3 ft., \$1.00 each. 3-4 ft., \$1.50 each. 4-5 ft., \$2.00 each.

**MOCKORANGE, VIRGINAL.** Large, lovely pure white, fragrant flowers. Semi-dwarf. 18-24 in., \$1.00 each. 2-3 ft., \$1.50 each. 3-4 ft., \$2.00 each.

**PEARL BUSH.** Dazzling white flowers in May. 2-3 ft., \$1.25 each. 3-4 ft., \$1.75 each.

**REGEL BORDER PRIVET.** Low-growing. Graceful, drooping branches. Blue berries hanging on well into winter. 18-24 in., \$1.25 each. 2-3 ft., \$1.75 each.



All Summer Flowering Abelia

# Flowering Shrubs

## For The Modern Home Planting

Our Blooming Size Plants will furnish beauty the first summer after being transplanted

**ABELIA GRANDIFLORA.** One of the most beautiful and useful of all flowering shrubs. Glossy foliage which is evergreen in Virginia, excepting severe winters. Small, light pink, tubular blossoms from July until frost. 18-24 in., \$1.50 each. 2-3 ft., \$2.00 each.

**ALMOND, FLOWERING.** Dwarf. Pink flowers in early spring. 18-24 in., \$1.25 each. 2-3 ft., \$1.75 each.

**ALTHEA (Rose of Sharon).** Pink, Purple, Red, White. 2-3 ft., \$1.00 each. 3-4 ft., \$1.50 each.

**ARROW-WOOD.** Large white flowers, blue berries, autumn-colored foliage. 2-3 ft., \$1.00 each.

**BARBERRY THUNBERGI.** Green-leaved Barberry. Used as specimens and in borders. 3-yr., 15-18 in., 60c each; 3 to 30, 55c each; 30 or more, 50c each. 4-yr., heavy, 18-24 in., 90c each; 3 to 30, 80c each; 30 or more, 70c each.

**BARBERRY, RED LEAVED.** Resembles Green-leaved Barberry, but has blood-red foliage. Yellow blossoms followed by red berries. Plant in full sunlight. 15-18 in., 85c each; 3 to 30, 50c each; 30 or more, 75c each. 18-24 in., \$1.25 each; 3 to 30, \$1.15 each; 30 or more, \$1.00 each.

**BEAUTYBUSH.** Long, arching branches covered in early spring with masses of pink, tubular blossoms. 2-3 ft., \$2.00 each.

**BUSH HONEYSUCKLE.** Pink or white. 2-3 ft., \$1.00 each. 3-4 ft., \$1.50 each.

**BUTTERFLY BUSH (Buddleia).** Pink, Purple, Red, White. 2-yr., \$1.00 ea.

**CHINESE BEAUTYBERRY.** Graceful, dwarf shrub. White flowers July and August, purple berries. 18-24 in., \$1.00 each. 2-3 ft., \$1.50 each.

**CORALBERRY, CHENAULTI.** Dwarf shrub. Pink flowers in early summer, coral berries which hang on well into winter 2-3 ft., \$1.00 each. 3-4 ft., \$1.50 each.

**COTONEASTER DIVARICATA (Spreading Cotoneaster).** From China. Grows 5 to 6 feet high. Graceful, spreading. Red, egg-shaped fruit. Attractive autumn foliage. 3-4 ft., \$2.75 each.

**GRAPE MYRTLE.** Pink, Purple, Red and White. The South's most beautiful shrub. Blooms July until frost. Adapted to southern and eastern part of Virginia and along Atlantic Seacoast as far north as Philadelphia. 18-24 in., \$1.50 each. 2-3 ft., \$2.00 each. Write for prices on large B&B plants.

**DEUTZIA CRENATA.** Double pink, slightly fragrant flowers. 2-3 ft., \$1.00 each. 3-4 ft., \$1.50 each. 4-5 ft., \$2.00 each.

**DEUTZIA GRACILIS.** Dwarf grower. Snowy white flowers in May. 12-15 in., \$1.25 each. 15-18 in., \$1.75 each.

**DEUTZIA GRACILIS ROSEA.** Similar to Gracilis but pink flowers. 12-15 in., \$1.25 each.

**DEUTZIA LEMOINE.** Large flowering. White. June. 18-24 in., \$1.25 ea.

**DEUTZIA, PRIDE OF ROCHESTER.** Fast growing. Masses of pink-tinted flowers. 2-3 ft., \$1.00 each. 3-4 ft., \$1.50 each.

**DOGWOOD, RED STEM.** Spreading shrub with reddish purple branches which are quite ornamental during winter. Creamy white flowers, followed by white berries. 2-3 ft., \$1.00 each. 3-4 ft., \$1.50 each. 4-5 ft., \$2.00 each.

**DOGWOOD, GOLDEN STEM.** Same sizes and prices as Red Stem.

**ROSEMARY WILLOW.** Grows 8 to 10 feet. Attractive, slow growing. Silvery leaves. 2-3 ft., \$1.00 each. 3-4 ft., \$1.50 each.

**SNOWBALL, COMMON.** Large white flowers in May. 2-3 ft., \$1.25 each.

**SNOWBALL, JAPANESE.** Semi-dwarf type. Big white flowers in June. 2-3 ft., \$1.75 each. 3-4 ft., \$2.25 each.

**SNOWBERRY.** Handsome, dark green foliage. Profusion of white berries in the fall. 2-3 ft., \$1.00 each. 3-4 ft., \$1.50 each.

**SPIREA, ANTHONY WATERER.** Suitable for planting under windows and along shrub borders. Low growing. Flat, rose-pink flowers in great numbers in June, smaller numbers throughout summer. 15-18 in., \$1.25 each. 18-24 in., \$1.75 each.

**SPIREA BILLIARDI.** Pink spikes at their best in July, but continuing until late summer. 2-3 ft., \$1.00 each.

**SPIREA, BLUE.** Dwarf grower. Somewhat perennial-like. Blue flowers throughout summer. 3-yr. plants, \$1.00 each.

**SPIREA, KOREAN.** Resembles Van Houttei but two weeks later. Pure white. 2-3 ft., \$1.00 each. 3-4 ft., \$1.50 each.

**SPIREA, REEVES.** White flowers along branches in May, following Van Houttei. 2-3 ft., \$1.00 each. 3-4 ft., \$1.50 each.

**SPIREA THUNBERGI.** Dainty white flowers in May. Orange and red autumn foliage. 2-3 ft., \$1.00 each.

**SPIREA VAN HOUTTEI.** Well known. Graceful, weeping branches. Masses of pure white flowers in early spring. 2-3 ft., 3 for \$2.10; 30 or more, 65c each. 3-4 ft., \$1.00 each.

**STRAWBERRY BUSH.** Red berries burst from capsules after leaves drop. Colorful fall foliage. 2-3 ft., \$1.75 each.

**SWEET SHRUB.** Old favorite. Dark reddish brown, fragrant flowers May to October. 2-3 ft., \$1.25 each. 3-4 ft., \$1.75 each.

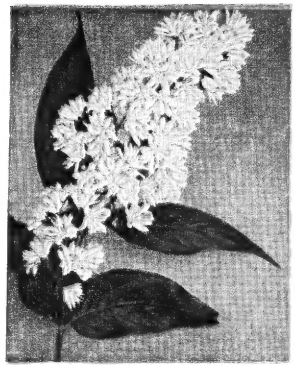
**TAMARIX.** Feather-like foliage. Delicate pink flowers in April. 3-4 ft., \$1.25 each. 4-5 ft., \$1.75 each.

**VITEX MACROPHYLLA.** Lavender flower spikes from July until frost. 18-24 in., \$1.00 each.

**WEIGELA ROSEA.** Well known Pink Weigela, blooming abundantly in May and June. 2-3 ft., \$1.25 each.

**WINTERBERRY.** Hardy, deciduous Holly. Noted for its red, shiny winter berries. 2-3 ft., \$1.25 each. 3-4 ft., \$1.75 each.

**WINTER JASMINE.** Low-growing. Weeping branches. Profusion of yellow blossoms in early spring. 2-yr., \$1.50 each.



Nationally Known  
Pride of Rochester Deutzia

**EUONYMUS ALATUS (Winged Burningbush).** Upright, compact, dwarf grower. Tiny, chocolate-colored flowers, red berries. Beautiful scarlet autumn foliage. 18-24 in., \$1.00 each. 2-3 ft., \$1.50 each.

**FLOWERING QUINCE.** Red flowers early spring. Also known as "Japonica." 18-24 in., \$1.00 each. 2-3 ft., \$1.25 each.

**FORSYTHIA (Goldenbell).** One of the most beautiful and useful spring flowering shrubs. Yellow, tubular flowers before foliage appears. Available in following choice varieties:

**Fortunei.** Vigorous, upright grower. Twisted petals.

**Showy Border (Spectabilis).** Upright. Popular, profuse bloomer.

**Weeping (Suspensa).** Beautiful weeping shrub.

**PRICES on Fortunei, Showy Border, Weeping Forsythia.** 2-3 ft., \$1.00 each. 3-4 ft., \$1.50 each. 4-5 ft., \$2.00 each.

**DWARF FORSYTHIA.** New dwarf. Suitable for foundation plantings. 15-18 in., \$1.00 each. 18-24 in., \$1.50 each. 2-3 ft., \$2.00 each.

**SPRING GLORY FORSYTHIA.** Loveliest of all Goldenbells. Dwarf. Large, creamy yellow flowers in profusion. 18-24 in., \$1.00 each. 2-3 ft., \$1.50 each. 3-4 ft., \$2.00 each.

### ORDER EARLY WHILE STOCK IS COMPLETE

**PLANTING SEASONS.** While some planting is done throughout the year, the heavy planting is from October to May. Bulbs and Evergreens begin moving in early October, Deciduous Shrubs and Trees by November first.

**TRANSPORTATION CONDITIONS.** All plant material and supplies, unless otherwise specified, are offered f.o.b. our nursery. Shipment can be made by parcel post, express, freight, or motor freight, depending somewhat upon size of shipment. Small items offered in this folder can be sent by parcel post to points within a radius of three hundred miles by adding to your remittance 15% of the list prices to cover postage and special packing; three hundred to six hundred miles, 20%.

**TERMS.** Net cash, or 25% deposit on C.O.D. shipments. Remittances may be made by money order or personal check.

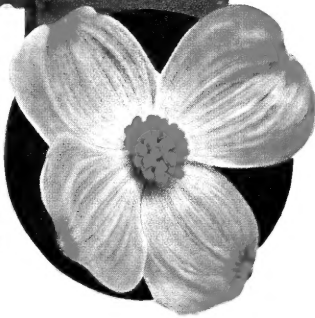
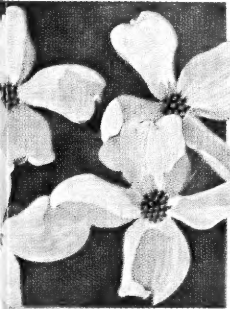
**REPLACEMENT GUARANTEES.** We are very careful in keeping our varieties true to name—and seldom have a report of plant material proving otherwise. In such instances we limit our adjustments to either refunding without charge or refunding full purchase price. Losses from transplanting our vigorous, carefully handled plant material are at a minimum, but we agree to share with our customers on a fifty-fifty basis any losses reported within 12 months from date of delivery by refunding at half catalog list price, provided original purchase was paid for as per sale terms and plant material has been given reasonable attention.

WAYNESBORO NURSERIES, Waynesboro, Virginia.



Famous Old Hydrangea P. G.

# SHADE AND FLOWERING TREES



Dogwood—Virginia's State Flower

**ELM, AMERICAN.** Well known, large growing shade tree. 6-8 ft., \$3.25 each. 8-10 ft., \$4.00 each.

**ELM, CHINESE.** Fast growing. Dark green foliage. 5-6 ft., \$2.00 each. 6-8 ft., \$2.75 each. 8-10 ft., \$3.75 each.

**FLOWERING CHERRY, KWANZAN DOUBLE PINK.** Upright grower. A large per cent of the trees in famous Potomac Basin planting at Washington, D. C., are of this type. 3-4 ft., \$3.75 each. 4-5 ft., \$4.50 each.

**FLOWERING CRABS.** Among the most useful ornamental trees. Planted for shade as well as flowers in May and fruits in autumn. Fruits useful for delicious jelly and pickles. Offered in following choice varieties:

- **Dolgo.** White flowers. Scarlet fruit.
- **Eleyi.** Red flowers. Red fruit.
- **Hopa.** Pink flowers. Red fruit.
- **Oriental.** White flowers. Yellow fruit.
- **Parkman.** Bright rose flowers. Purplish red fruit.
- **Redfield.** Deep pink flowers. Red fruit.
- **Red Silver.** Crimson flowers. Red fruit.
- **Redvein.** Deep pink flowers. Purple fruit.
- **Scheideckeri.** Pink flowers. Yellow fruit.

**Flowering Crab Prices:**  
3-4 ft., \$2.25 each. 4-6 ft., \$2.75 each.

**FLOWERING PEACH.** Striking colorful tree for spring gardens. Double pink, red, white. 3-4 ft., \$2.00 each. 4-6 ft., \$2.75 each.

**GINKGO (Maidenhair Tree).** Pyramidal tree with maidenhair fernlike foliage. 4-6 ft., \$3.00 each.

**GUM, SOUR.** Medium to small grower. Noted for its scarlet foliage in autumn. 6-8 ft., \$5.00 each.

**GUM, SWEET.** Medium size tree. Beautiful gold and scarlet foliage in fall. 6-8 ft., \$5.00 each.

**HONEY LOCUST, THORNLESS.** Greenish white, fragrant flowers in early summer. 5-6 ft., \$2.75 each. 6-8 ft., \$3.50 each.

**LINDEN, AMERICAN.** Fast grower. Large, dark green foliage. Fragrant, creamy flowers. 6-8 ft., \$4.50 each. 8-10 ft., \$6.00 each.

**LINDEN, EUROPEAN LITTLE-LEAF.** Smaller leaves than the American, more dwarf, compact grower. 6-8 ft., \$5.00 each.

**MAGNOLIA, JAPANESE.** Deciduous tree growing only 12 to 15 feet high, branched from ground. Tulip-like flowers in early spring just ahead of foliage. We offer two varieties as follows:

**Soulangeana** with pink flowers, and **Soulangeana nigra** with purplish red flowers. 2-3 ft., B&B, \$6.00 each.

**MAPLE, CRIMSON KING.** Patent No. 735. Recent introduction from Europe. A brilliant new tree. Crimson foliage all summer. Perfectly hardy. 5-6 ft., \$6.25 each.

**MAPLE, NORWAY.** Medium size tree suited for street and home planting. 5-6 ft., \$3.75 each. 6-8 ft., \$4.50 each.

**MAPLE, SCARLET.** Light green foliage generally turning scarlet in fall. Not quite as dense as Norway. 5-6 ft., \$3.75 each. 6-8 ft., \$4.50 each.

**MAPLE, SCHWEDLER'S.** Red-leaved in spring, turning deep green later in season. 5-6 ft., \$4.25 each. 6-8 ft., \$5.00 each.

**MAPLE, SILVER.** Fast grower. Light green foliage slightly silvery underneath. 6-8 ft., \$3.50 each. 8-10 ft., \$4.50 each.

**MAPLE, SUGAR.** Tall, pyramidal grower. Beautiful autumn-colored foliage in shades of gold and scarlet. 6-8 ft., \$4.50 each. 8-10 ft., \$6.00 each.

**OAKS.** English White, Pin, Red, Scarlet, White. 5-6 ft., \$4.25 each. 6-8 ft., \$5.00 each.

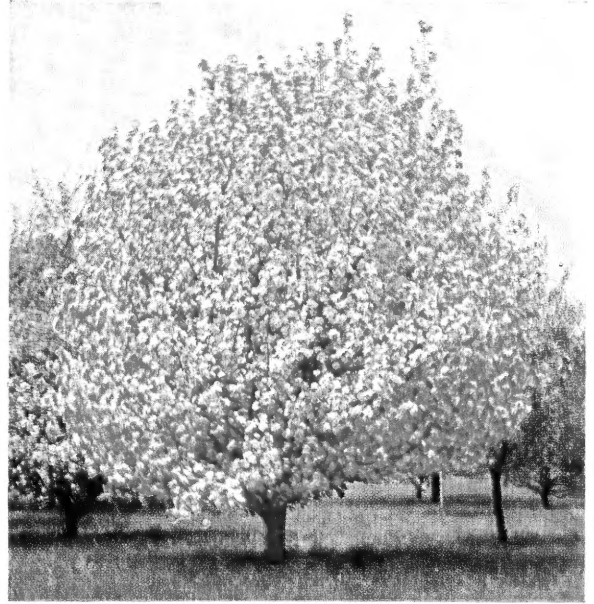
**PLANE, ORIENTAL.** Good grower. 6-8 ft., \$4.25 each. 8-10 ft., \$5.50 each.

**POPLAR, BOLLEANA.** Wider grower than Lombardy and longer lived. 6-8 ft., \$2.25 each. 8-10 ft., \$3.00 each.

**POPLAR, LOMBARDY.** Tall slender, rapid grower. 5-6 ft., \$1.25 each. 6-8 ft., \$1.50 each. 8-10 ft., \$2.00 each.

**REDBUD.** Beautiful small tree. Pink flowers cover stems in early spring before foliage appears. 3-4 ft., \$1.75 each. 4-6 ft., \$2.50 each.

**RUBY TREE (Prunus pissardi).** Purplish red foliage in spring, retaining its color well throughout summer. Ornamental, bright red fruits. 3-4 ft., \$2.25 each. 4-6 ft., \$2.75 each.



Hopa Flowering Crab—For Shade, Blossoms and Fruit

**SOURWOOD.** Medium size grower. Brilliant red foliage late summer. 5-6 ft., \$4.50 each.

**TULIP TREE.** Also known as Tulip Poplar. Large, stately, fast-growing native tree. Fragrant creamy cup-shaped, Tulip-like flowers blotched orange. 5-6 ft., \$2.75 each. 6-8 ft., \$3.75 each.

**WILLOW, BABYLON WEeping.** Well known, beautiful weeping tree. Especially suitable for planting along streams, but can be grown on well drained soil. 5-6 ft., \$2.25 each. 6-8 ft., \$3.00 each.

## Pink Flowering Dogwood

One of the most popular flowering trees. 18-24 in., \$2.75 each. 2-3 ft., \$3.50 each. 3-4 ft., B&B, \$6.50 each.

**DOGWOOD, WHITE-FLOWERING.** Virginia's State Flower. Especially effective when planted in groups with Pink-Flowering Dogwood. 2-3 ft., \$2.25 each. 3-4 ft., \$2.75 each.

**Note:** Write for prices on large B&B specimens in Pink and White Dogwood.

## EVERGREENS

**CONIFEROUS EVERGREENS.** Write for 56-page Planting Guide Catalog for list of varieties, sizes, prices and color illustrations.

**BROAD-LEAVED EVERGREENS.** Including Azaleas, Hollies, Boxwood, Hybrid Rhododendrons. Write for 56-page Planting Guide Catalog illustrating many in color.



Double Flowering Peach



Fast Growing Silver Maple.



# GROW AND ENJOY YOUR OWN FRUIT - Served Fresh from the Tree or Vine or from Your Home Freezer

Choice Fruit and Nut Trees, Small Fruits and Ornamentals  
Offered by Virginia's Largest Growers - For Fall 1954 and Spring 1955 Planting

Order Early While Stock is Complete  
WAYNESBORO NURSERIES · WAYNESBORO, VIRGINIA

## APPLES

Plant Apples for fruit, look and landscape effect. No fruit is quite as delicious as that grown in your own garden. Our selection of the better varieties of Apples will furnish fruit from earliest to latest.

During the past twenty years many trees of the old varieties have been abandoned while planting of new ones represent only a small part of the loss. Apple production is expected to decline for many years to come. Surely plantings of the better Apples would be a profitable investment.

### STANDARD SUMMER AND FALL APPLES

- ANOKA**, New, early-bearing red. Summer. July-August. 3-yr. tree.
- EARLY RED BIRD**, Sweet-tasting. Our earliest Apple. Mid-season.
- EARLY HARVEST**, Large golden yellow. July.
- GRIMES GOLDEN**, Popular spicy, golden yellow. Summer.
- HORSE APPLE**, Old-time greenish yellow. August.
- HYSPLO CRAB**, Red, medium size. Fine for jelly and pickling.
- LODI**, Improved Yellow Transparent. Early. July.
- MAIDEN BLUSH**, Medium size, yellow background, red blush. August.
- RED JUNE**, Red, medium size. Good for early and late use.
- SMOKEHOUSE**, Red striped. Excellent for cooking and eating from hand. Early September.
- SUMMER RAMBO**, Large, red striped. Makes fine jam.
- SUMMER YELLOW DELICIOUS**, Golden yellow. Resistant to winter Yellow Blight.
- WILLIAMS EARLY RED**, Popular early red. Late July.
- YELLOW TRANSPARENT**, Favorite for sauce, and a good shipper. Late June.

### RIPENING ORDER - Summer and Fall Apples

Variety	Color	Variety	Color
Early Red Bird	Red	Double Red Duchess	Red
Yellow Transparent	Yellow	Summer Rambo	Red
Lodi	Yellow	Maiden Blush	Red
Early Harvest	Golden yellow	Smokeshouse	Red striped
Red June	Red	Hy-splo Crab	Red
Anoka	Yellow	Grimes Golden	Golden yellow
Summer Yellow Delicious	Yellow		
Williams Early Red	Red		

### DELICIOUS STANDARD WINTER APPLES

- DELICIOUS**, Standard. Well known winter Apple. Large, red striped, almost sweet.
- DOUBLE RED, STARKING STRAIN**, Eastern Strain. Differs from VANCE by coloring with stripes.
- DOUBLE RED, VANCE STRAIN**, We consider this the most desirable of the Double Red Apples for the following reasons:
  1. **Early Coloring**, which makes possible early harvesting and marketing of Western Apples.
  2. **Good Color**, uniform, smooth, pleasing, bright red.
  3. **Size**, one of the largest Apples, emphasizing typical Delicious shape and make.
  4. **Flavor**, Delicious to the extra per tree.
- JONATHAN, DOUBLE RED**, Improved Jonathan, having more color and coloring early.
- LOWRY**, Originated in Nelson County, Virginia, and believed to be a cross between the popular old-time Pilot and Virginia Winesap. Medium to large, mahogany-red. Remarkable keeper. Withstands much cold. Tree vigorous grower. Profitable commercial Apple favored for home orchard planting.
- M. B. TWIG**, Large, red Apple of Winesap family. Firm, long keeper. 3-yr. tree.
- N. W. GREENING**, Large, greenish yellow. Good cooker, excellent for pies.
- RED GRAVENSTEIN**, Deep red. Crisp, tender, juicy. Late fall and winter.
- ROME, DOUBLE RED C&O**, (Western Strain). Improved Rome Beauty, ripening two weeks earlier. Solid red. Originated in Northwest.
- ROME DOUBLE RED, STRAIN No. 282**, Also originated in Northwest. Considered by many as superior to all other strains. 10c extra per tree.

### STAYMAN

STAYMAN. One of the best known winter Apples. Large, red striped, mahogany-red. Ripens in late fall. STAYMAN, DOUBLE RED, STRAIN No. 201, Promising new Northwestern introduction. 10c extra per tree. STAYMAN, SCARLET RED, Differs from Stayman chiefly by showing traces of dark red stripes; other qualities the same.

### SAVE TIME IN GROWING FRUIT

By planting one Super and Bearing Size Apple tree which have been true transplanted and will furnish fruit much earlier than smaller, younger trees. Available in following varieties and sizes:

- 1-yr. 3-4 ft. trees, \$3.25 each in lots of 1 to 5; 5 to 10, \$3.15 each.
- 2-yr. 4-5 ft. trees, \$3.75 each in lots of 1 to 5; 5 to 10, \$3.50 each.

### OUR FRUIT TREES ARE REGULARLY INSPECTED

By Virginia State Entomologist to insure our customers healthy, vigorous stock, and also frequently inspected by the Massachusetts Forestry & Name Inspection Service, affording double protection against mixtures.

### 5-IN-1 APPLE TREE

Made possible by grafting Apples ripening earliest to latest. Ideal where space can accommodate only one or two trees. Varieties grafted on 5-in-1 Trees will vary, but generally consist of Yellow Transparent, Summer Rambo, Stayman, Yellow Delicious and Red Delicious. 2-yr., 4-5 ft. size, \$3.50 each. 3-yr., 5-7 ft. size, \$4.00 each.

### 4-IN-1 TREE

Produced in same manner as 5-in-1, but having one less variety. 2-yr., 4-5 ft. size, \$3.00 each. 3-yr., 5-7 ft. size, \$3.50 each.

### 3-IN-1 TREE

Consists of three choice Apples ripening at different seasons. 2-yr., 4-5 ft. size, \$2.50 each. 3-yr., 5-7 ft. size, \$3.00 each.

Write for Free Copy 56-Page Planting Guide Catalog in Color.

### DWARF APPLE TREES

Early Bearing. Adapted to Limited Sites. Dwarf Apple Trees offered in following varieties:

- Delicious, Double Red
- Stayman, Double Red
- Summer Yellow Delicious
- Jonathan, Double Red
- Lodi
- Lowry
- Maiden Blush

2-yr., 3-4 ft. trees, \$3.25 each in lots of 1 to 5; 5 to 10, \$3.15 each.

2-yr., 4-5 ft. trees, \$3.75 each in lots of 1 to 5; 5 to 10, \$3.50 each.

\* Indicates varieties especially recommended for indication.

### PRICES 5- and 6-YEAR TREES

	1 to 3	3 to 10	10 to 30	30 to 50
Each	Each	Each	Each	Each
5-yr., 7-8 ft., Super Size	\$4.50	\$4.25	\$4.00	\$3.75
6-yr., 8-10 ft., Bearing Size	6.00	5.75	5.50	5.25

## PEACHES

Our table Ripening Peaches in ripening color enable you to make a selection furnishing fruit from earliest to latest; also indicates good and excellent freezing qualities.

In descriptions below, (Y) indicates Peaches with yellow flesh, (W) white flesh, (R) red flesh.

- AMBER GEM**, (Y). Commercial cling-stone variety. Firm, good quality.
- BELLE OF GEORGIA**, (W). Old favorite. Home canning Peach.
- DIXIEGEM**, (Y). New, vigorous and productive variety.
- ELBERTA**, (Y). Most extensively planted Peach in both home and commercial orchards. For well known to create a really superior Peach.
- GOLDEN JUDEE**, (Y). Sweet, excellent flavor. Home favorite.
- HALE-HAVEN**, (Y). High-ranking commercial Peach.
- HEATH CLING**, (W). Clingstone peckle-free variety.
- INDIAN**, (R). Solid red clingstone. Old-time variety.
- J. H. HALE**, (Y). Quality Peach for home and commercial growers.
- KRUMHOLTZ**, (Y). Large yellow free-stone with red cheek. Late.
- LATE ELBERTA**, (Y). Medium to large. Elberta character.
- MAYFLOWER**, (W). Earliest Peach we have ever grown.
- RED HAVEN**, (Y). Grand new home and commercial orchard variety.
- REDSKIN**, (Y). Red skin, yellow, firm flesh. High rating canner.
- RIO-O-GEM**, (Y). Generous red. Excellent quality and firm for shipping.
- SHIPPER**, (Y). Large, attractive, red-orange. Large, productive.
- SILAPPEY**, (Y). Sweet, highly flavored.
- SULLIVAN'S EARLY ELBERTA**, (Y). Early Elberta, identical size and color.
- SUNSHINE**, (Y). Large, bright red. Good for canning.
- TRIOGEM**, (Y). Large, early.

### PEACH TREE PRICES

	1 to 5	5 to 10	10 to 30	30 to 50
Each	Each	Each	Each	Each
5-6 ft., Jumbo Size	\$1.90	\$1.75	\$1.60	\$1.45
4-5 ft. Super Size	1.60	1.45	1.30	1.15
2-4 ft., Heavy	1.25	1.10	1.00	.90
2-3 ft., Heavy	1.10	1.00	.90	.80
2-3 ft., Medium	.85	.80	.70	.60
2-3 ft., Super Size	2.85	2.75	2.60	2.35

Note: On quantities of 50 or more, submit your list for commercial growers' prices.

## PLUMS

Easily Grown, Early, Prolific Bearers. There are two distinct types of Plums, the firm European and the tender juicy Oriental. For best results we recommend planting two or more varieties to provide for cross-pollination.

- ABUNDANCE**, Oriental. Lemon-yellow overpainted with bright red. August.
- EUROPEAN PRUNE**, Large purple. Firm, sweet. Excellent for canning. Late August.
- GREEN GAGE**, European type. Old favorite for home use. Purple green. August.
- MAMMOTH GOLDEN**, European type. Delicious, large golden yellow. Early August.
- RED JUNE**, Early red Oriental. Usually a late ripener.
- STANLEY PRUNE**, Large, firm, dark blue July. Fine-grained, tender. Sweet. Very late maturity. Excellent for canning, freezing and drying.

Note: On quantities of more than 50, write for commercial growers' prices.

### PRICES ON STANDARD SWEET CHERRIES

	1 to 5	5 to 10	10 to 30	30 to 50
Each	Each	Each	Each	Each
6-7 ft., Jumbo	\$3.00	\$2.85	\$2.70	\$2.55
4-6 ft.	2.50	2.35	2.20	2.05
3-4 ft.	1.40	1.30	1.20	1.10
2-3 ft., Jumbo Size	3.00	2.75	2.50	2.25

Note: On quantities of more than 50, write for commercial growers' prices.

### PRIZE SWEET CHERRIES

- GREENWOOD**, Enormous mahogany-red. Sweet fruit, small seed. Firm, excellent shipper as well as ideal Cherry for home stand and home use. Vigorous grower, prolific bearer.
- WINDSOR**, Blackish maroon. Especially large, juicy, firm, sweet. Recommended for cross-pollination. Late.

### PIE CHERRIES (Sour Cherries)

- EARLY RICHMOND**, Earliest of the sour pie varieties. Bright red.
- LEON MONTMORENCY**, The leading pie Cherry and most extensively planted of all Cherries. Large, mid-season. Grows into beautiful lawn tree.

Note: On quantities of more than 50, write for commercial growers' prices.

## PEACHES

Our table Ripening Peaches in ripening color enable you to make a selection furnishing fruit from earliest to latest; also indicates good and excellent freezing qualities.

In descriptions below, (Y) indicates Peaches with yellow flesh, (W) white flesh, (R) red flesh.

- AMBER GEM**, (Y). Commercial cling-stone variety. Firm, good quality.
- BELLE OF GEORGIA**, (W). Old favorite. Home canning Peach.
- DIXIEGEM**, (Y). New, vigorous and productive variety.
- ELBERTA**, (Y). Most extensively planted Peach in both home and commercial orchards. For well known to create a really superior Peach.
- GOLDEN JUDEE**, (Y). Sweet, excellent flavor. Home favorite.
- HALE-HAVEN**, (Y). High-ranking commercial Peach.
- HEATH CLING**, (W). Clingstone peckle-free variety.
- INDIAN**, (R). Solid red clingstone. Old-time variety.
- J. H. HALE**, (Y). Quality Peach for home and commercial growers.
- KRUMHOLTZ**, (Y). Large yellow free-stone with red cheek. Late.
- LATE ELBERTA**, (Y). Medium to large. Elberta character.
- MAYFLOWER**, (W). Earliest Peach we have ever grown.
- RED HAVEN**, (Y). Grand new home and commercial orchard variety.
- REDSKIN**, (Y). Red skin, yellow, firm flesh. High rating canner.
- RIO-O-GEM**, (Y). Generous red. Excellent quality and firm for shipping.
- SHIPPER**, (Y). Large, attractive, red-orange. Large, productive.
- SILAPPEY**, (Y). Sweet, highly flavored.
- SULLIVAN'S EARLY ELBERTA**, (Y). Early Elberta, identical size and color.
- SUNSHINE**, (Y). Large, bright red. Good for canning.
- TRIOGEM**, (Y). Large, early.

### PEACH TREE PRICES

	1 to 5	5 to 10	10 to 30	30 to 50
Each	Each	Each	Each	Each
5-6 ft., Jumbo Size	\$1.90	\$1.75	\$1.60	\$1.45
4-5 ft. Super Size	1.60	1.45	1.30	1.15
2-4 ft., Heavy	1.25	1.10	1.00	.90
2-3 ft., Heavy	1.10	1.00	.90	.80
2-3 ft., Medium	.85	.80	.70	.60
2-3 ft., Super Size	2.85	2.75	2.60	2.35

Note: On quantities of 50 or more, submit your list for commercial growers' prices.

## PLUMS

Easily Grown, Early, Prolific Bearers. There are two distinct types of Plums, the firm European and the tender juicy Oriental. For best results we recommend planting two or more varieties to provide for cross-pollination.

- ABUNDANCE**, Oriental. Lemon-yellow overpainted with bright red. August.
- EUROPEAN PRUNE**, Large purple. Firm, sweet. Excellent for canning. Late August.
- GREEN GAGE**, European type. Old favorite for home use. Purple green. August.
- MAMMOTH GOLDEN**, European type. Delicious, large golden yellow. Early August.
- RED JUNE**, Early red Oriental. Usually a late ripener.
- STANLEY PRUNE**, Large, firm, dark blue July. Fine-grained, tender. Sweet. Very late maturity. Excellent for canning, freezing and drying.

Note: On quantities of more than 50, write for commercial growers' prices.

### PRICES ON STANDARD SWEET CHERRIES

	1 to 5	5 to 10	10 to 30	30 to 50
Each	Each	Each	Each	Each
6-7 ft., Jumbo	\$3.00	\$2.85	\$2.70	\$2.55
4-6 ft.	2.50	2.35	2.20	2.05
3-4 ft.	1.40	1.30	1.20	1.10
2-3 ft., Jumbo Size	3.00	2.75	2.50	2.25

Note: On quantities of more than 50, write for commercial growers' prices.

### PRIZE SWEET CHERRIES

- GREENWOOD**, Enormous mahogany-red. Sweet fruit, small seed. Firm, excellent shipper as well as ideal Cherry for home stand and home use. Vigorous grower, prolific bearer.
- WINDSOR**, Blackish maroon. Especially large, juicy, firm, sweet. Recommended for cross-pollination. Late.

### PIE CHERRIES (Sour Cherries)

- EARLY RICHMOND**, Earliest of the sour pie varieties. Bright red.
- LEON MONTMORENCY**, The leading pie Cherry and most extensively planted of all Cherries. Large, mid-season. Grows into beautiful lawn tree.

Note: On quantities of more than 50, write for commercial growers' prices.

## PEACHES

Our table Ripening Peaches in ripening color enable you to make a selection furnishing fruit from earliest to latest; also indicates good and excellent freezing qualities.

In descriptions below, (Y) indicates Peaches with yellow flesh, (W) white flesh, (R) red flesh.

- AMBER GEM**, (Y). Commercial cling-stone variety. Firm, good quality.
- BELLE OF GEORGIA**, (W). Old favorite. Home canning Peach.
- DIXIEGEM**, (Y). New, vigorous and productive variety.
- ELBERTA**, (Y). Most extensively planted Peach in both home and commercial orchards. For well known to create a really superior Peach.
- GOLDEN JUDEE**, (Y). Sweet, excellent flavor. Home favorite.
- HALE-HAVEN**, (Y). High-ranking commercial Peach.
- HEATH CLING**, (W). Clingstone peckle-free variety.
- INDIAN**, (R). Solid red clingstone. Old-time variety.
- J. H. HALE**, (Y). Quality Peach for home and commercial growers.
- KRUMHOLTZ**, (Y). Large yellow free-stone with red cheek. Late.
- LATE ELBERTA**, (Y). Medium to large. Elberta character.
- MAYFLOWER**, (W). Earliest Peach we have ever grown.
- RED HAVEN**, (Y). Grand new home and commercial orchard variety.
- REDSKIN**, (Y). Red skin, yellow, firm flesh. High rating canner.
- RIO-O-GEM**, (Y). Generous red. Excellent quality and firm for shipping.
- SHIPPER**, (Y). Large, attractive, red-orange. Large, productive.
- SILAPPEY**, (Y). Sweet, highly flavored.
- SULLIVAN'S EARLY ELBERTA**, (Y). Early Elberta, identical size and color.
- SUNSHINE**, (Y). Large, bright red. Good for canning.
- TRIOGEM**, (Y). Large, early.

### PEACH TREE PRICES

	1 to 5	5 to 10	10 to 30	30 to 50
Each	Each	Each	Each	Each
5-6 ft., Jumbo Size	\$1.90	\$1.75	\$1.60	\$1.45
4-5 ft. Super Size	1.60	1.45	1.30	1.15
2-4 ft., Heavy	1.25	1.10	1.00	.90
2-3 ft., Heavy	1.10	1.00	.90	.80
2-3 ft., Medium	.85	.80	.70	.60
2-3 ft., Super Size	2.85	2.75	2.60	2.35

Note: On quantities of 50 or more, submit your list for commercial growers' prices.

## PLUMS

Easily Grown, Early, Prolific Bearers. There are two distinct types of Plums, the firm European and the tender juicy Oriental. For best results we recommend planting two or more varieties to provide for cross-pollination.

- ABUNDANCE**, Oriental. Lemon-yellow overpainted with bright red. August.
- EUROPEAN PRUNE**, Large purple. Firm, sweet. Excellent for canning. Late August.
- GREEN GAGE**, European type. Old favorite for home use. Purple green. August.
- MAMMOTH GOLDEN**, European type. Delicious, large golden yellow. Early August.
- RED JUNE**, Early red Oriental. Usually a late ripener.
- STANLEY PRUNE**, Large, firm, dark blue July. Fine-grained, tender. Sweet. Very late maturity. Excellent for canning, freezing and drying.

Note: On quantities of more than 50, write for commercial growers' prices.

### PRICES ON STANDARD SWEET CHERRIES

	1 to 5	5 to 10	10 to 30	30 to 50
Each	Each	Each	Each	Each
6-7 ft., Jumbo	\$3.00	\$2.85	\$2.70	\$2.55
4-6 ft.	2.50	2.35	2.20	2.05
3-4 ft.	1.40	1.30	1.20	1.10
2-3 ft., Jumbo Size	3.00	2.75	2.50	2.25

Note: On quantities of more than 50, write for commercial growers' prices.

### PRIZE SWEET CHERRIES

- GREENWOOD**, Enormous mahogany-red. Sweet fruit, small seed. Firm, excellent shipper as well as ideal Cherry for home stand and home use. Vigorous grower, prolific bearer.
- WINDSOR**, Blackish maroon. Especially large, juicy, firm, sweet. Recommended for cross-pollination. Late.

### PIE CHERRIES (Sour Cherries)

- EARLY RICHMOND**, Earliest of the sour pie varieties. Bright red.
- LEON MONTMORENCY**, The leading pie Cherry and most extensively planted of all Cherries. Large, mid-season. Grows into beautiful lawn tree.

Note: On quantities of more than 50, write for commercial growers' prices.

## RASPBERRIES

**LATHAM**, Brilliant red, muscadine-resistant. Rates as high among Reds as any other. Excellent for home use.

**SUNRISE**, New, red introduced by U. S. Department of Agriculture. Very early. Especially adapted to the South where not all Red Raspberries are successful.

**STANDARD RED RASPBERRY PRICES**: 6 for \$2.00; 12 for \$2.95; 25 for \$4.75; 50 for \$8.00; 100 for \$14.00; 250 for \$30.00; 500 for \$48.85; 1,000 for \$85.00.

### Everbearing Indian Summer Raspberry

New red. Best of all Everbearers. Produces enormous crop in early spring, ripening in the fall. Large, long, excellent quality. Bears first season.

**INDIAN SUMMER PRICES**: 6 for \$2.25; 12 for \$3.25; 25 for \$5.25; 50 for \$8.50; 100 for \$16.00; 250 for \$33.00; 500 for \$50.00; 1,000 for \$95.00.

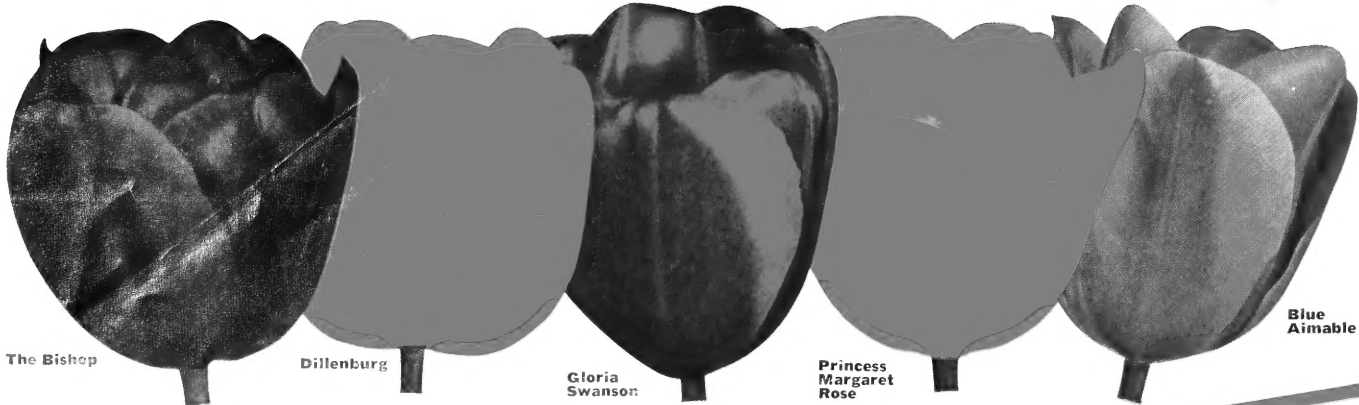
### NEW EBONY KING BLACKBERRY

Bright, large, sweet, hardy, early bearing. No black or drupe plants. Best Blackberry available. **PRICES**: 2-yr. transplants, \$3.00; 12 for \$5.50; 25 for \$10.00; 50 for \$18.00; 100 for \$34.50.

Write for Free Copy 56-Page Planting Guide Catalog in Color.

## BLACKCAP RASPBERRIES

**CUMBERLAND**, Outstanding among Blackcap Raspberries. Large, sweet, hardy. **PRICES**: 2-yr. transplants, \$3.00; 1



The Bishop

Dillenburg

Gloria Swanson

Princess Margaret Rose

Blue Aimable

**DAFFODILS**

**SPECIAL DAFFODIL MIXTURE.** For naturalizing and mass plantings. 12 for \$1.40; 25 for \$2.75; 50 for \$5.00; 100 for \$9.00.

**DUTCH IRIS**

Low growing, colorful, spring blooming. Mixed colors. **Blooming Size Bulbs,** 25 for \$1.00; 50 for \$1.75; 100 for \$3.25.

**HARDY GARDEN CHRYSANTHEMUMS**

**AUTUMN LIGHTS.** Coppery bronze. Semi-double. Sept.

**BURGUNDY.** Cerise-crimson. Double. Late. Sept. **FIRECRACKER.** New bright red. Long lasting. Sept.

**GLACIER.** Large white. Low growing. Late Sept. **JOAN HELEN.** Semi-double garnet-red. Sept.

**LIMELIGHT.** Beautiful soft yellow. Early Sept. **MANDALAY.** Deep orange-bronze. Early Oct.

**OCTOBER.** Pretty Daisy-like, single yellow. Oct. **ORCHID SPOON.** Orchid-pink, spoon type. Late Sept.

**RED VELVET.** Double velvety crimson. Late Sept. **SPLURGE.** Deep lavender pompon. Sept.

**YELLOW SPOON.** Good yellow spoon type. Late Sept.

Prices on Above Chrysanthemums: 3 of one variety for \$1.60; 12 for \$6.00, your choice of varieties.

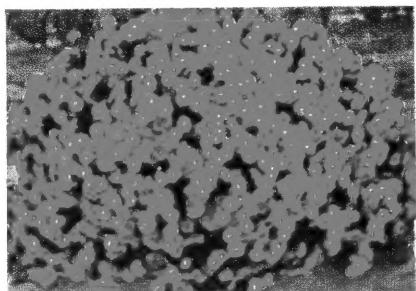
**CROCUS**

**MIXED COLORS.** 25 for \$1.75; 50 for \$2.75; 100 for \$4.75; 500 for \$21.00; 1,000 for \$38.00.

Note: See our 56-page Planting Guide Catalog for descriptions of our Spring Flowering Bulbs.

**HYACINTHS**

**MIXED COLORS.** 12 for \$2.75; 25 for \$5.00; 50 for \$9.00; 100 for \$17.00.



Red Cushion Mum

**FAMOUS CUSHION MUMS**

Bronze, Pink, Red, White and Yellow. 3 of one color for \$1.60; 12 for \$6.00, your choice of colors. Three each Bronze, Pink, Red, White and Yellow—total 15 Cushion Mums, \$7.50.

**"BIG 5" Tulip Collection**

3 each of Tulips illustrated—total 15 Large Size Bulbs	\$1.75
5 each—total 25 Large Size Bulbs	2.75
10 each—total 50 Large Size Bulbs	5.00
20 each—total 100 Large Size Bulbs	9.00

**CHINESE EVERGREEN PRIVET HEDGE**

(Ligustrum sinensis). Also known as Amur River South Privet. Improved, evergreen type. Just as hardy as California Privet and has added advantage of retaining its glossy green foliage throughout average winter. Rapid, compact grower. Plant 6 in. apart in single row, and prune back within few inches of ground at time planted.

	10-50	50-100	100-300	300 up
	Each	Each	Each	Each
2-yr. 12-18 in. Branched	\$0.20	\$0.16	\$0.14	\$0.12
2-yr. 18-24 in. Heavily Branched	.25	.22	.20	.18
2-yr. 2-3 ft. Heavily Branched	.30	.26	.24	.22

**NEW MULTIFLORA ROSE FENCE.** Inexpensive, easy to grow, stock-light. Grows 6 to 8 ft. tall, 5 to 7 ft. wide. Plant 1 ft. apart in single row. Protects soil, crops, game.

	50-100	100-300	300 up
	Each	Each	Each
6-12 in.	\$0.10	\$0.08	\$0.07
12-18 in.	.15	.12	.10
18-24 in.	.20	.17	.15

**BOXWOOD HEDGE:** See Prices and Sizes in our Planting Guide Catalog.



America \$1.75

Snow Girl \$1.50

Pink Girl \$1.25

Lady Constance \$2.00

**AFRICAN VIOLETS**

*New and Better Varieties*

For insured, parcel post shipment, add 25c per plant.

**Varieties**

- Azure Beauty.** Double white, large blue center. \$2.00 each.
- Double Orchid.** Good double orchid. \$1.00 each.
- DuPont Blue.** Giant double-violet. Nice foliage. \$1.25 each.
- DuPont Lavender-Pink.** Large lilac-pink blossoms. \$1.25 each.
- Lady Geneva.** Violet-blue with white edge. \$1.00 each.
- Pink Sheen.** Pink with light center. \$1.75 each.
- Purity.** Double white with orchid shadings. \$2.50 each.
- Red Geneva Girl.** Dark orchid with white edge. \$2.00 each.
- Red King.** Deep reddish purple. \$1.50 each.
- Star Sapphire.** Midnight blue. Five-petal, star-like. \$1.25 each.

**PRIZE WINNING COLLECTION**  
One each African Violets illustrated—total 4 Blooming Size Plants—Catalog List Price—\$6.50

**SPECIAL PRIZE WINNING COLLECTION PRICE**  
—\$5.50

Write for complete African Violet price list.

**NEW CHINESE CHESTNUT**



Fast Growing, Early Bearing, Blight Resistant. Valuable for shade as well as abundant crops of delicious nuts. Large, sweet Chestnuts are again a reality. Replacing the American Sweet Chestnut, which was destroyed by blight. Plant Chinese Blight-Resistant Chestnuts for attractive home ground shade trees and also reap a harvest of delicious, sweet nuts.

Write for commercial growers' prices on lots of more than 30.

PRICES—	1 to 10 Each	10 to 30 Each
12-18 in.	\$1.20	\$1.00
18-24 in.	1.75	1.50
2-3 ft.	2.45	2.20
3-4 ft., bearing size	3.00	2.75
4-5 ft., bearing size	3.75	3.50
5-7 ft., bearing size	4.50	4.25

If Not Delivered in 10 Days Return to WAYNESBORO NURSERIES, Waynesboro, Virginia Return Postage Guaranteed

Sec. 34.66, P.L. & R.  
U. S. POSTAGE  
**PAID**  
Waynesboro, Va.  
Permit No. 9

Librarian  
U. S. Dept. of Agri.  
Washington 25, D. C. g